

## Modify of Pandaboard or PandaboardES

To use the Pandaboard Expansion, You should solder some components to your Pandaboard at first, Just like the Figure 1 ~ Figure 3:

1. Solder 29 33 $\Omega$  Resistors (0402 Package ) to the Pandaboard's Backside; (**If you are using Pandaboard ES, it doesn't need these resistors**).
2. Solder 2 1.27mm connectors to the Pandaboard's Backside;
3. Solder 2 2.54mm connectors to the Pandaboard's Backside;
4. Remove off the 4 Rubbers from the Pandaboard's Backside;

We will provide these components to customer together with Pandaboard Expansion.

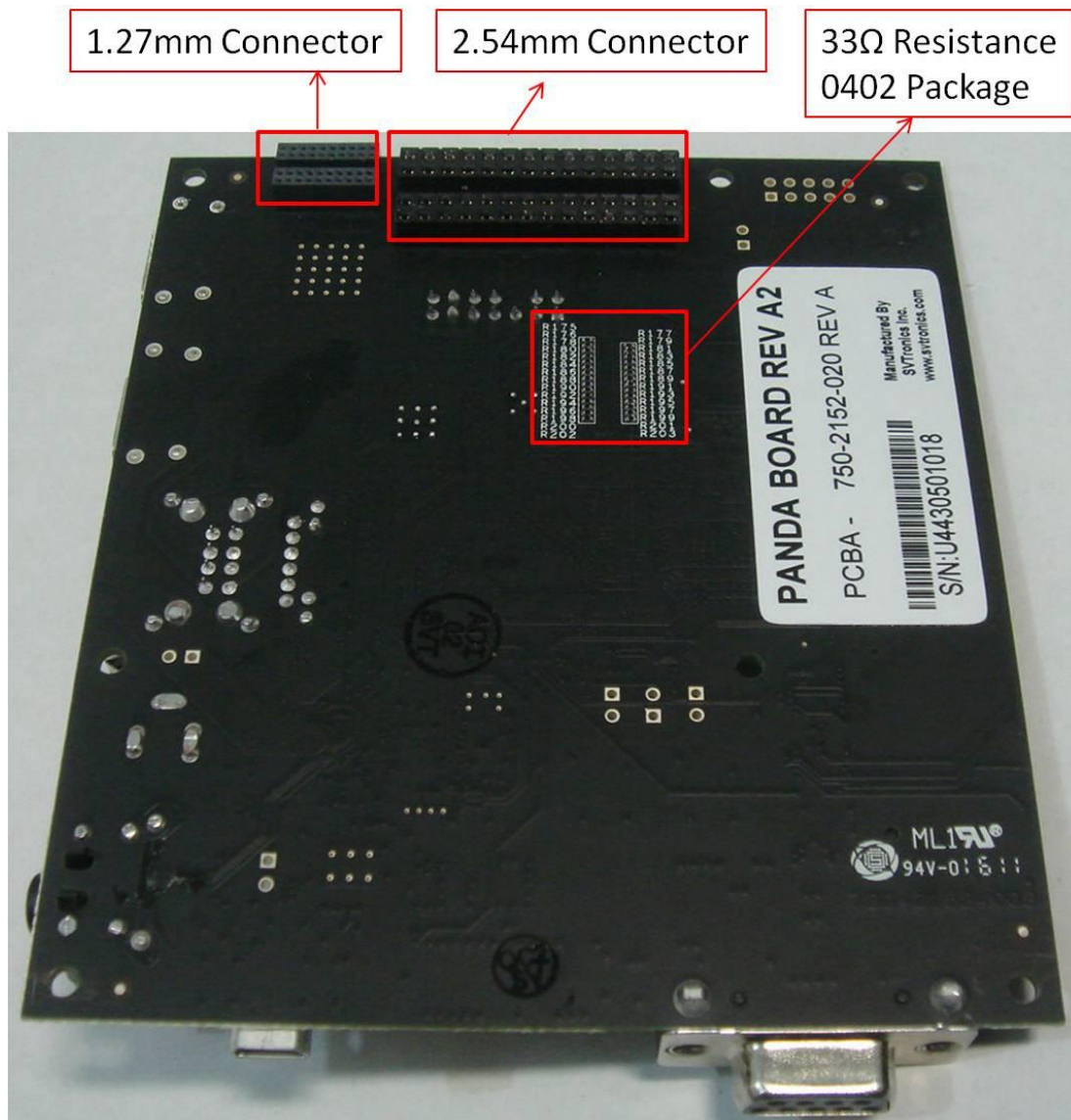


Figure 1. Backside of Pandaboard

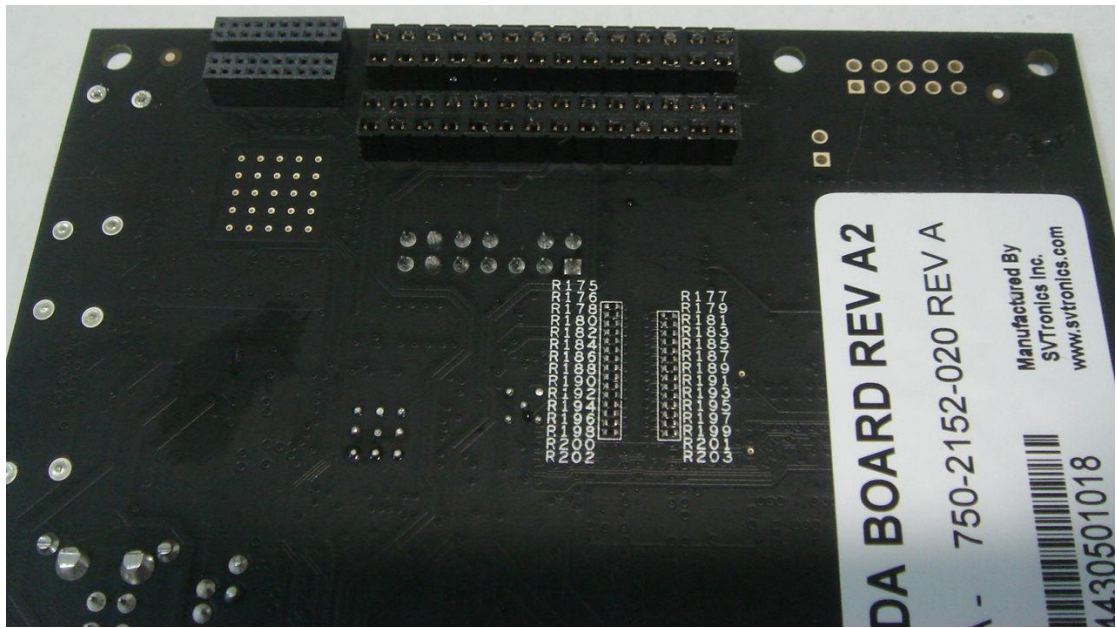
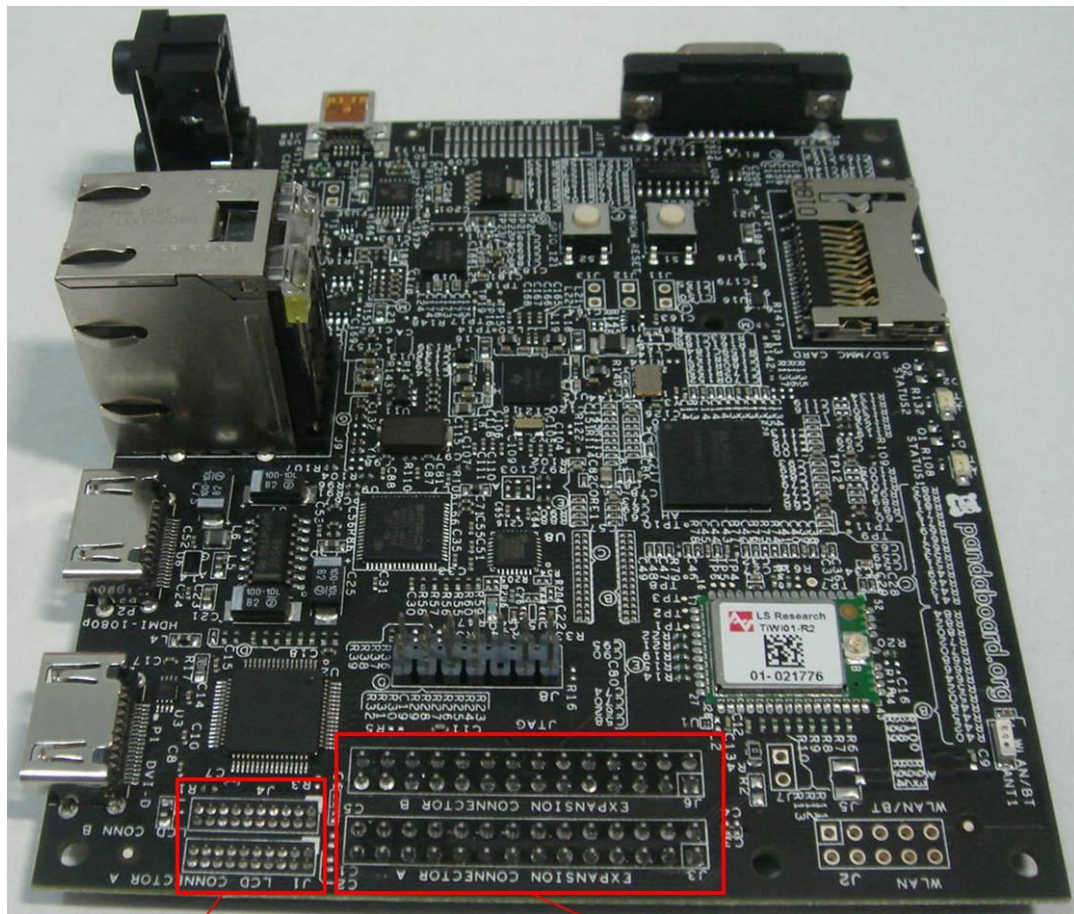


Figure 2. Backside of Pandaboard



1.27mm Connector

2.54mm Connector

Figure 3. Top of Pandaboard

When finished the modifying of Pandaboard, you can connect it with the Expansion board, just like Figure 4 and Figure 5.



Figure 4. Pandaboard working with the Expansion board and Run Android2.3



Figure 5. Pandaboard working with the Expansion board and Run Ubuntu11.04

If any question, please contact [service@chipsee.com](mailto:service@chipsee.com)

